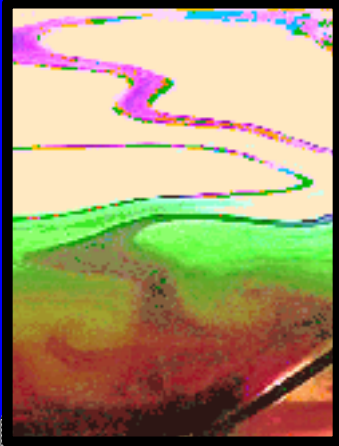


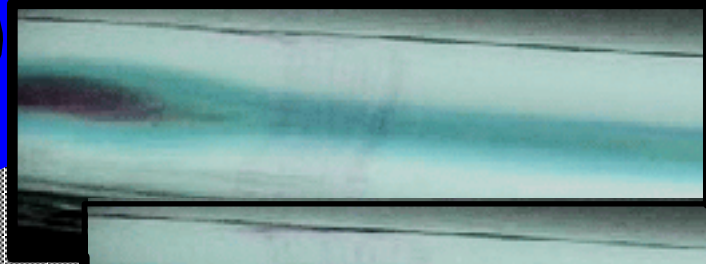
The Environmental and Industrial Fluid Dynamics Laboratory

Environmental Modelling

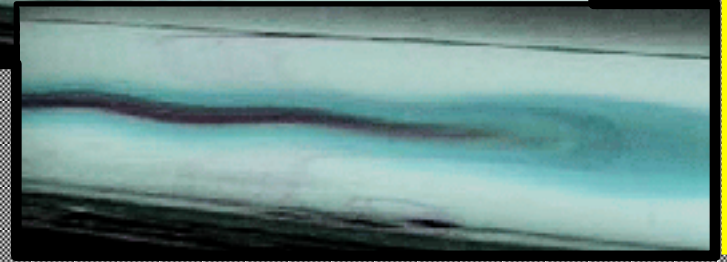
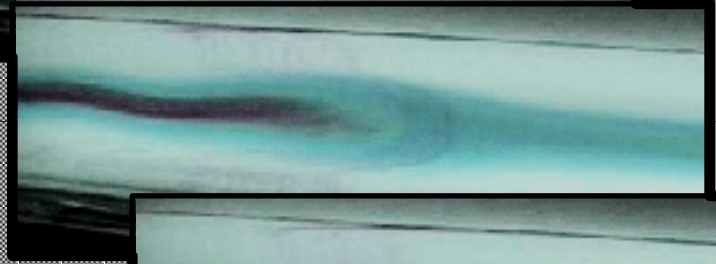
Industrial Modelling



Mixing in Tailings Ponds

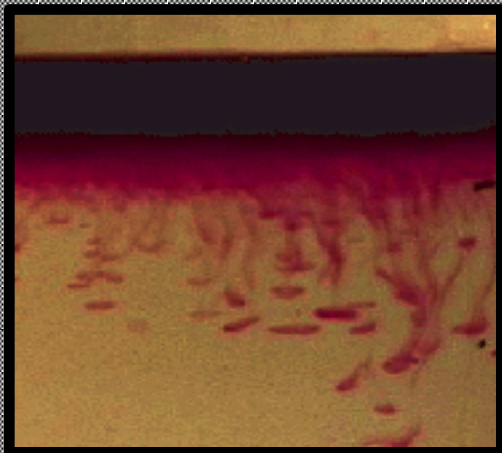


Morning Glory



Mathematical and Numerical Analyses

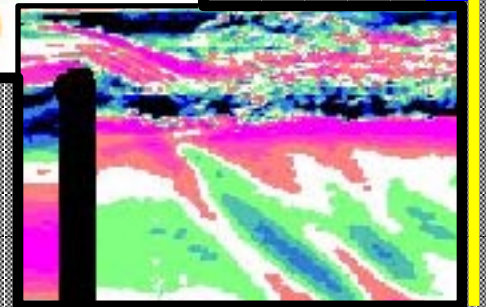
Teaching and Summer School



salt-fingers



waves and turbulence



Supporting sponsors: The Applied Mathematics Institute, the Pacific Institute for the Mathematical Sciences, the University of Alberta

Contact: Bruce R. Sutherland, Director; Phone: (403) 492-0573; FAX: 492-6826; Email: bruce.sutherland@ualberta.ca; Web: <http://taylor.math.ualberta.ca/~eifl>