



MITACS/GEOIDE Conference On Forest Fire Modelling

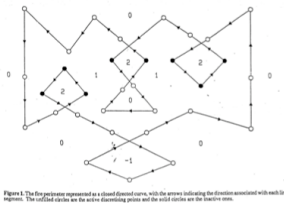


Figure 1. The fire perimeter represented as a closed directed curve, with the arrows indicating the direction associated with each fire segment. The circled nodes are for active burning points and the solid circles are the burning sites.

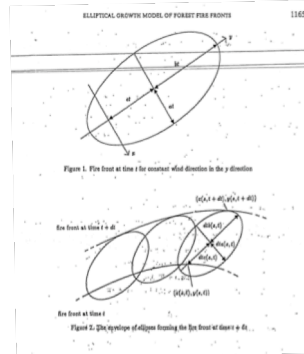


Figure 1. Fire front at time t for constant wind direction in the y direction

Fire front at time t' at

Figure 2. The type of ellipse tracing the fire front at time t .

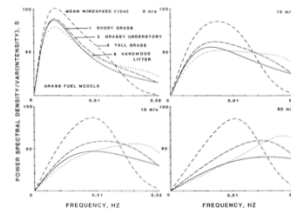
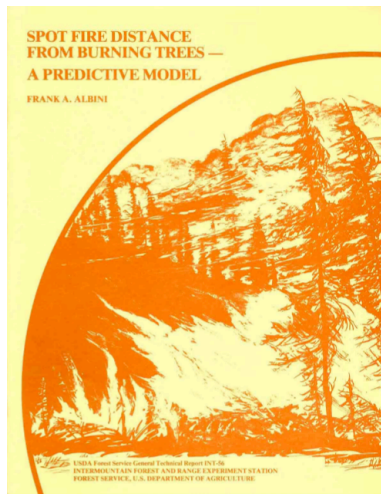


Figure 2. Power spectral densities of fire intensity fluctuations (divided by variance of intensity) for grass and hardwood litter fuels.

**Hinton Training Center, Hinton AB
June 22-23, 2009**